

# Empowering decisions makers to address deforestation

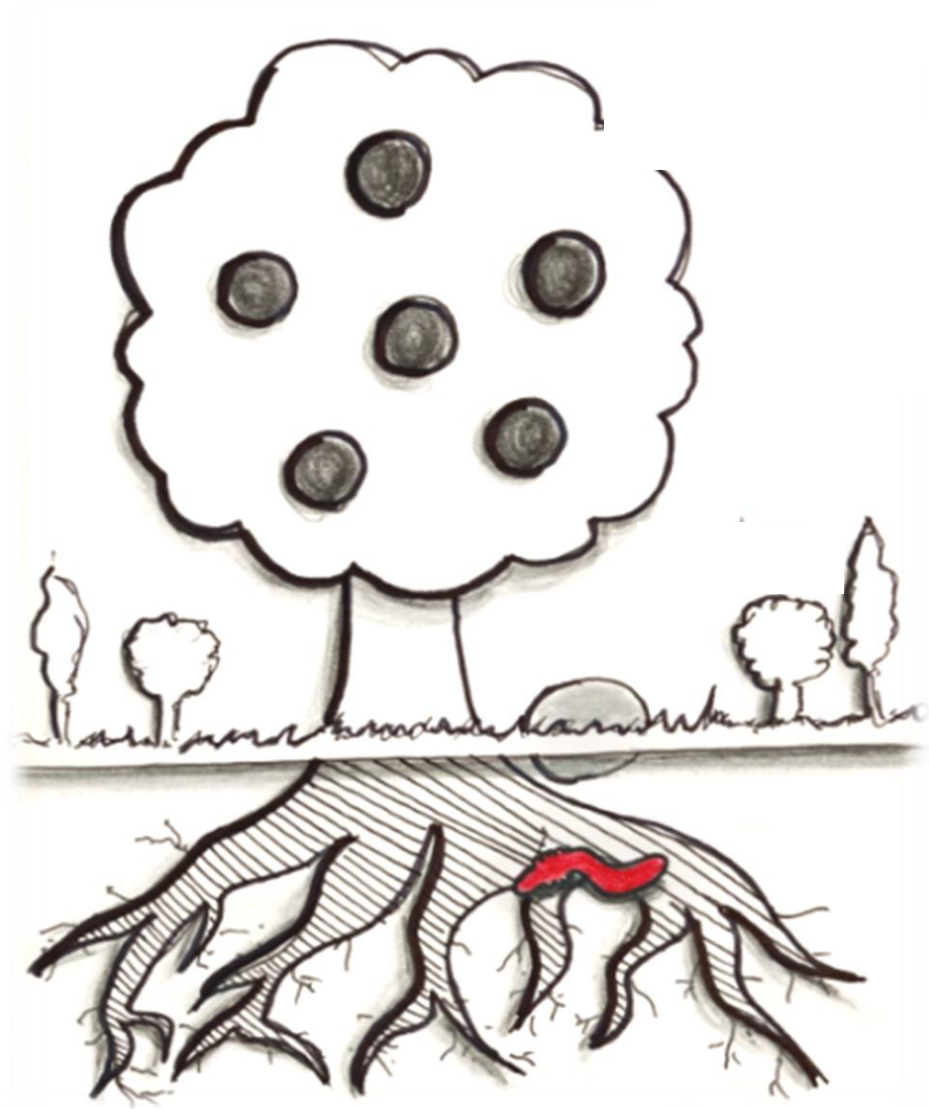
Deforestation : which strategies ?  
11.02.2021



# Leveraging the power of supply chains

«The products we consumer represent **our biggest impact** on our world».

«If we can **change the way they are made**, we can help **change the world**».





# No Deforestation commitments

2010: No Deforestation Company commitments  
(Nestlé, GAR etc...)

2014: New York Declaration  
Governments, UN

2020: Zero Net commitments  
Investors and corporates



How to implement?

How to verify?

# Starling: a European tool to manage and verify

2020



100% of supply chain monitored and verified

**STARLING**

2016





# Indonesia – Aceh Tamiang



**104 700 ha**

Forest Cover in 2016, the project baseline year



**231 000 ha**

Land area of Aceh Tamiang



## Focus Commodity

Key commodity in Aceh Tamiang. 38 oil palm companies own 85 concessions covering 47,400 ha. There are 9 mills within 5 km of landscape



**1.617 ha deforested**

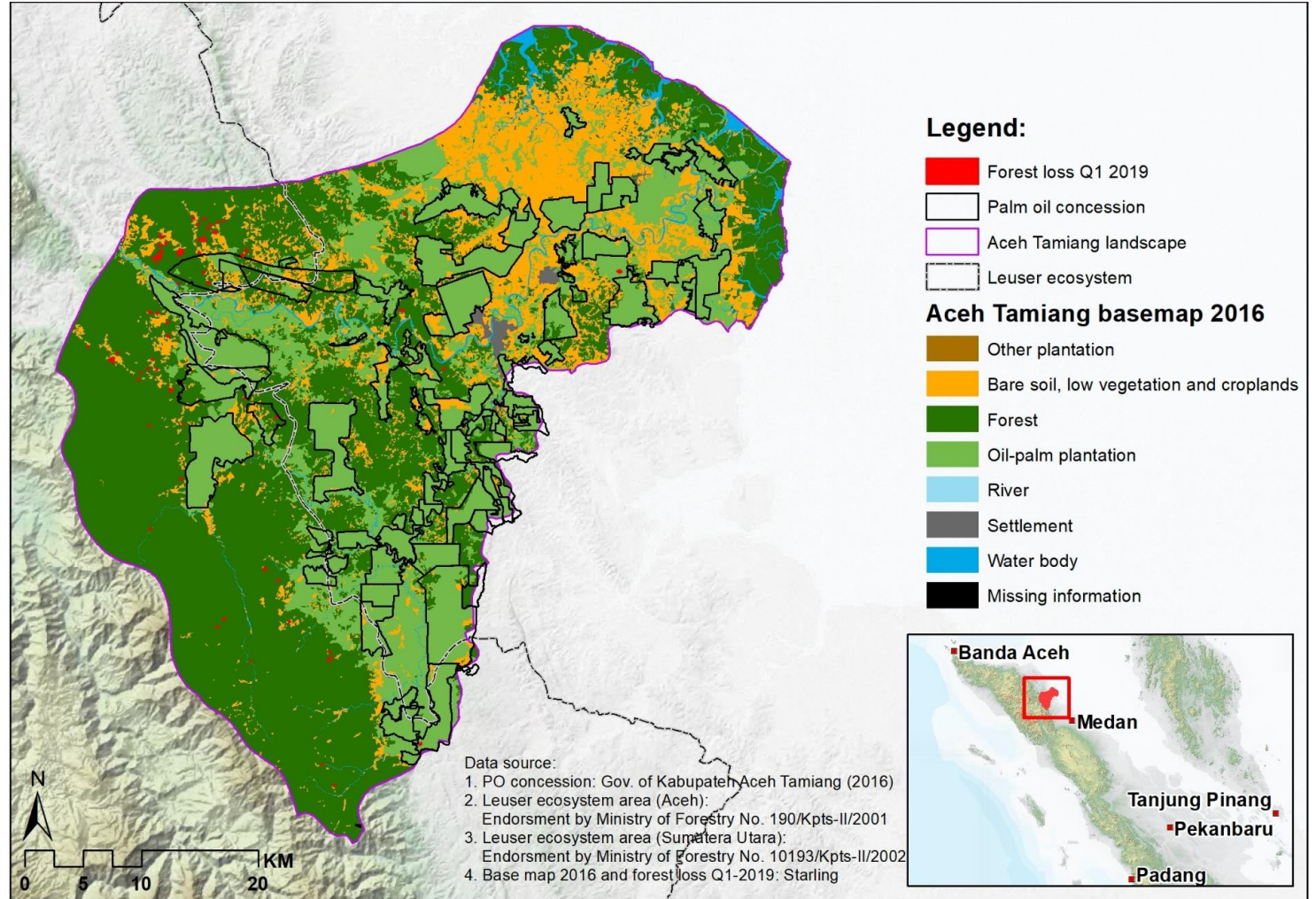
**from 2016-2018**

Deforestation dropping progressively in this time period



**1001 Smallholder Groups**

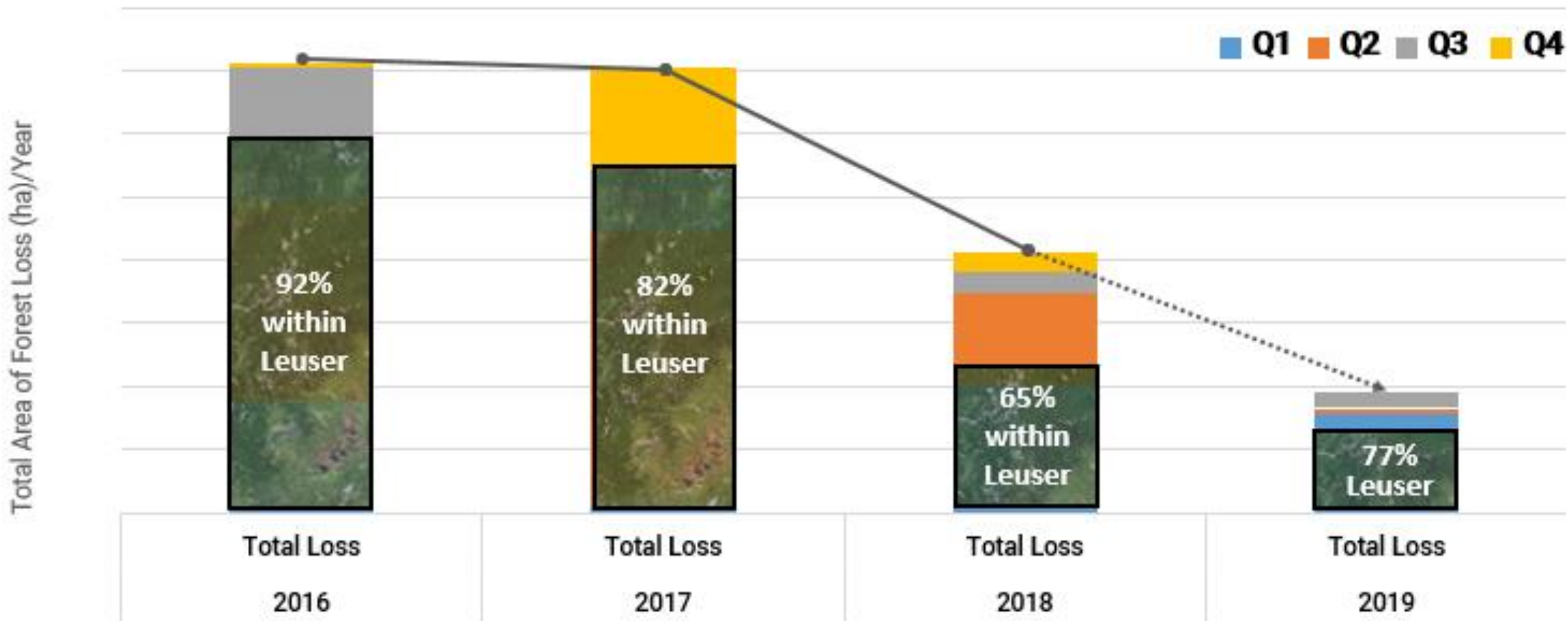
Commodities generating income to farmers in one of poorest regions in Indonesia





# Indonesia – Aceh Tamiang

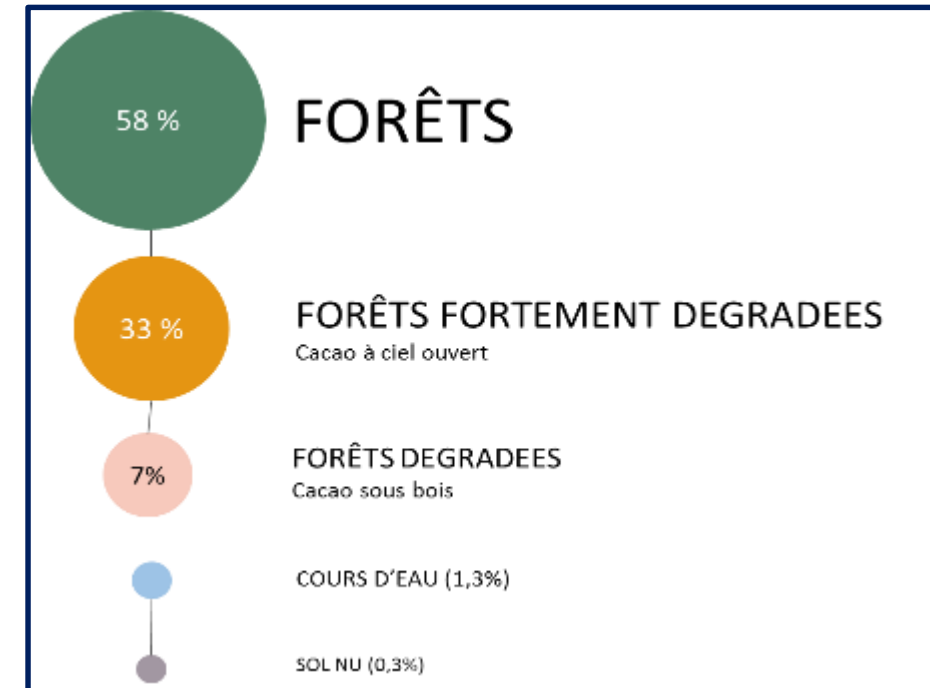
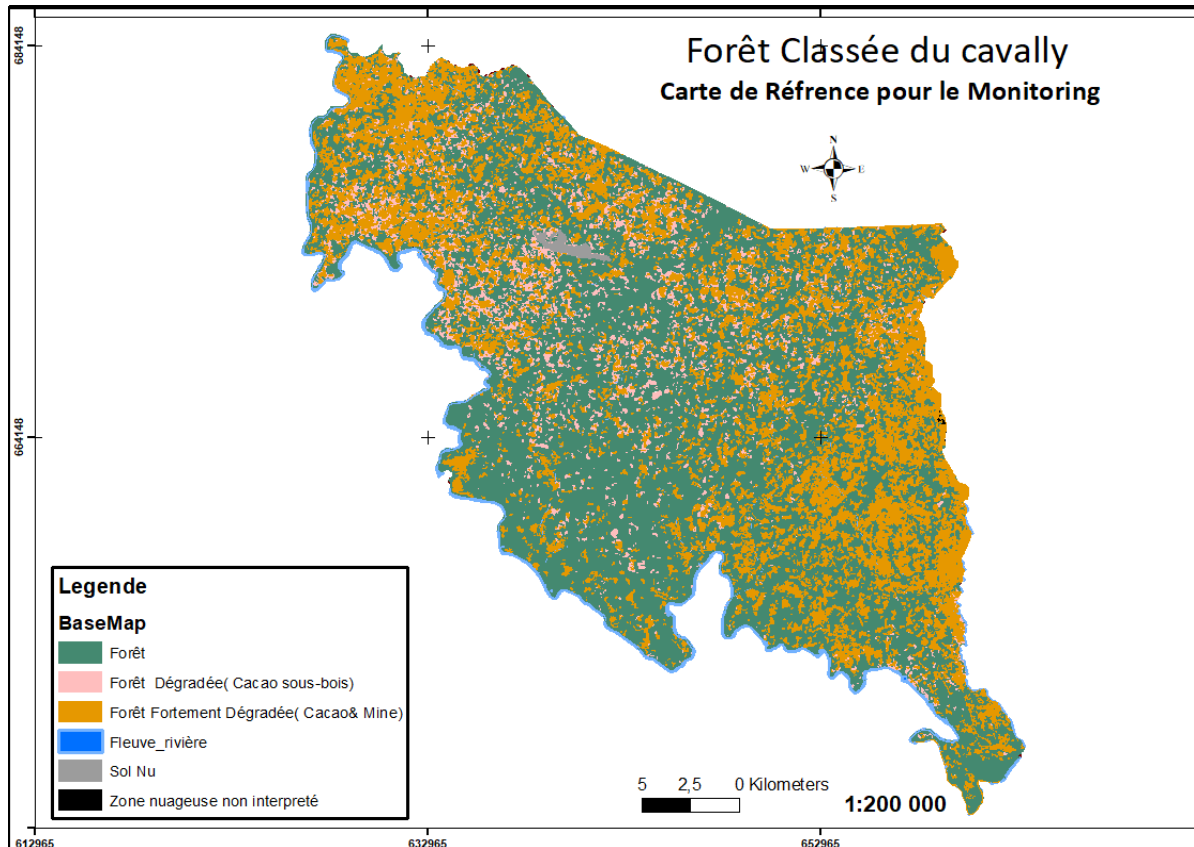
A 60% drop in deforestation from 2016 to 2019 detected over Aceh Tamiang. The majority of remaining deforestation is mainly occurring within the boundaries of the Leuser Ecosystem.





# Ivory Coast - Cavally

- November 2017 – SODEFOR and Starling launch a pilot project for monitoring cocoa linked deforestation in the Cavally Forest
- SODEFOR needed a technology which would allow them to see disturbances under the forest canopy
- January 2018 – Cavally Forest base map is published



*State of the forest in January 2018*

*Cavally Forest base map – January 2018*





# Forest degradation Q1 2018 → Q2 2019







# Beyond verification: a tool for cooperation between countries



<https://www.youtube.com/watch?v=7dWCKV0v9nw>